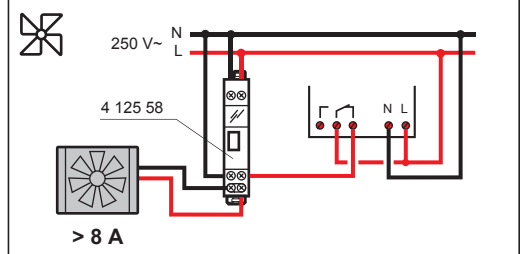
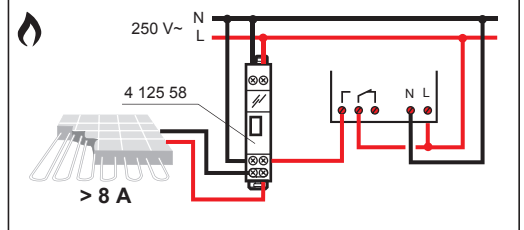
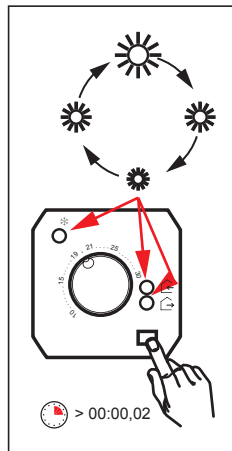
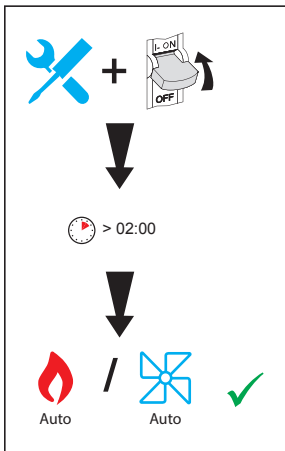
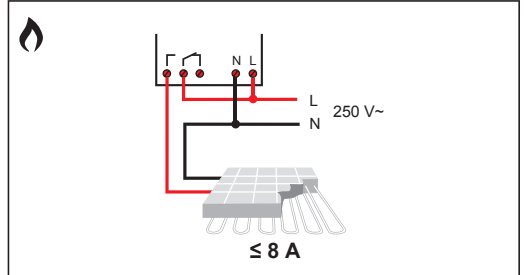
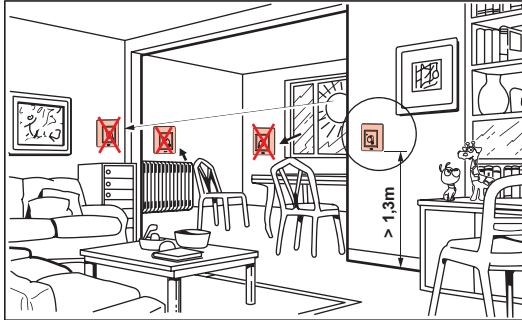
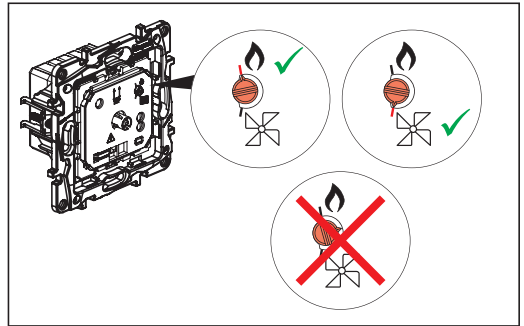
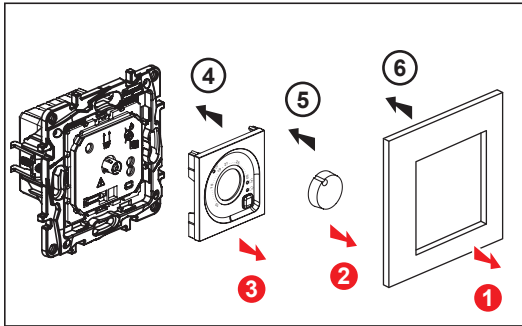
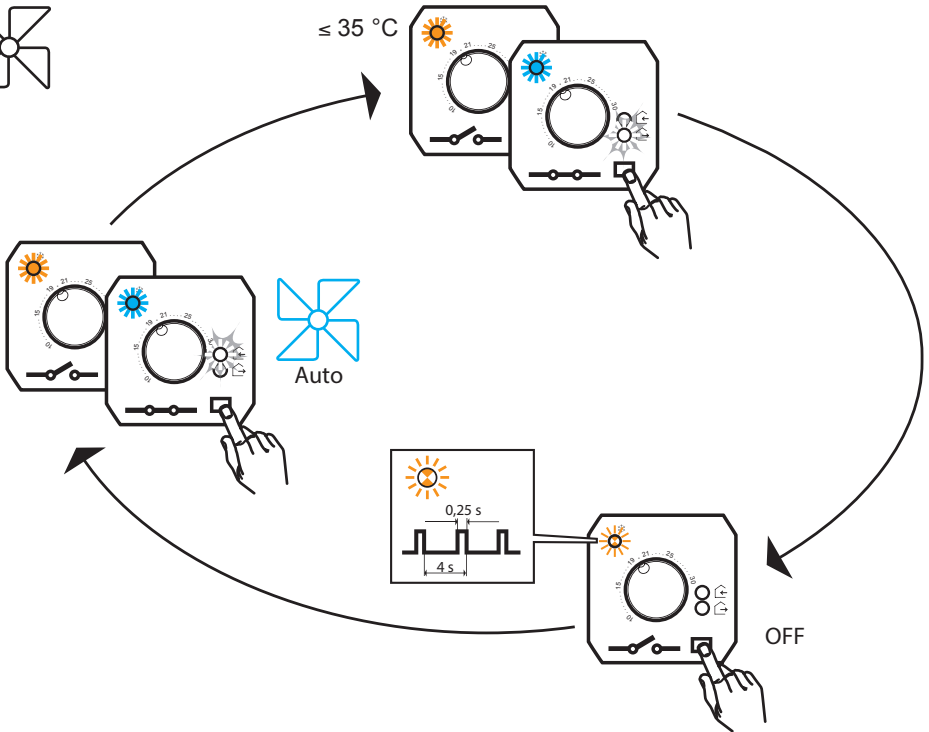
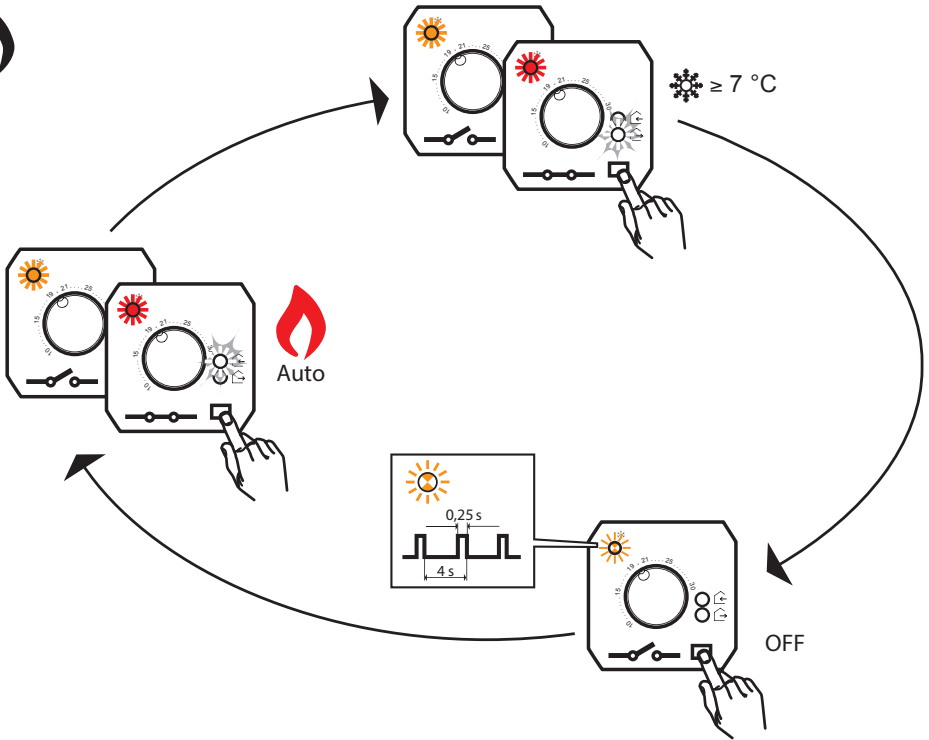
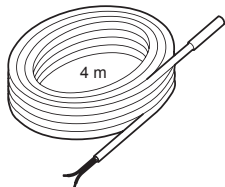
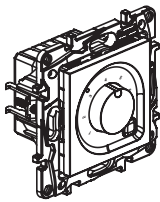


-10°C ... +70°C	-5°C ... +40°C	10°C ... 30°C	250 V~ 8 A, cos φ = 1 2 A, cos φ = 0,6	6 mm
P	U, f			
< 1 W	230 V~ 50 / 60 Hz	ΔK = ±2K		1,5..2,5 mm <sup>2</sup>



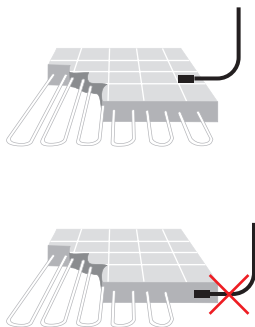
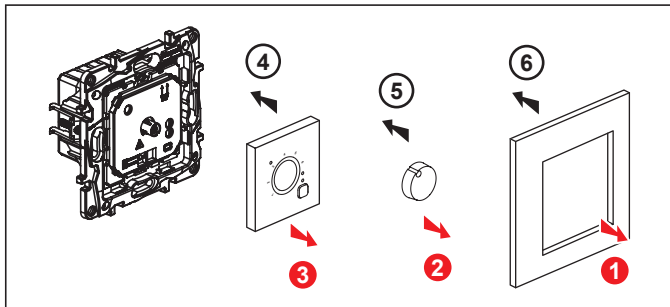




8 631 42  
8 633 42  
8 634 42  
8 635 42

			$\Delta K$
-10°C ... +70°C	-5°C ... +40°C	 1 ... 6 (10°C...60°C)	$\pm 2K$

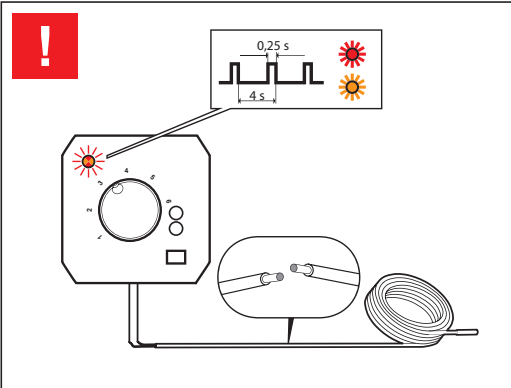
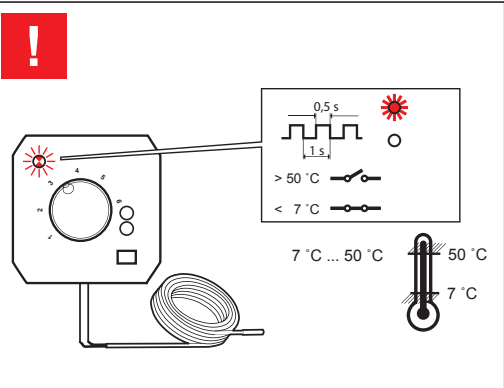
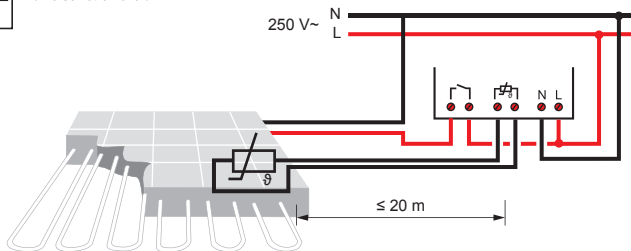
			P	U
$\leq 20$ m	250 V~ 16 A, $\cos \varphi = 1$	 6 mm 1.5..4 mm <sup>2</sup> 1.5..2.5 mm <sup>2</sup>	< 1 W	230 V~ 50 / 60 Hz



Terhelés

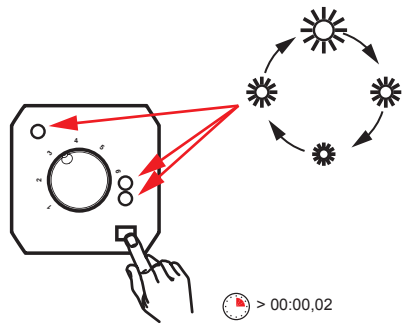


Hőmérséklet-érzékelő





> 02:00



> 00:00,02

